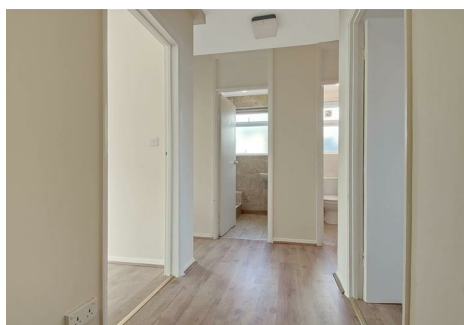


est 1979

Jeremy
Leaf & Co.



Ashurst Road, London

£380,000

- Bathroom
- High Road and amenities nearby
- 105 Year Lease
- Separate W.C.
- Reception Room
- Communal Garden
- Kitchen
- Ground Rent £50.00 p.a.
- Gardening £40 p.m.
- Two Double Bedrooms

863 High Road, London, N12 8PT
020 8446 4295

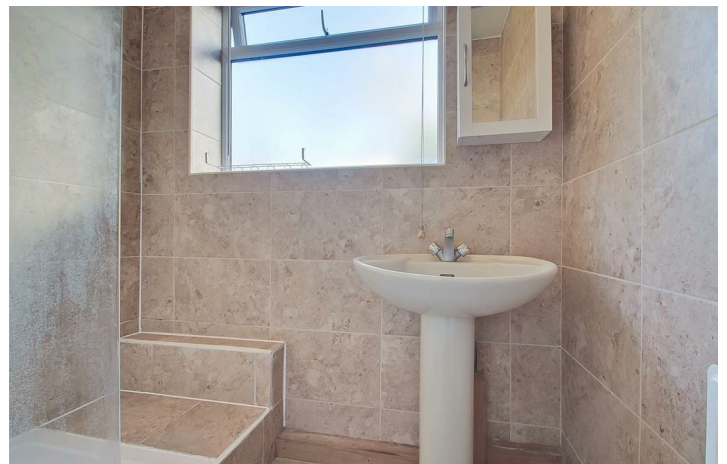
property@jeremyleaf.co.uk
<https://www.jeremyleaf.co.uk/>

Ashurst Road, London, N12 9AE

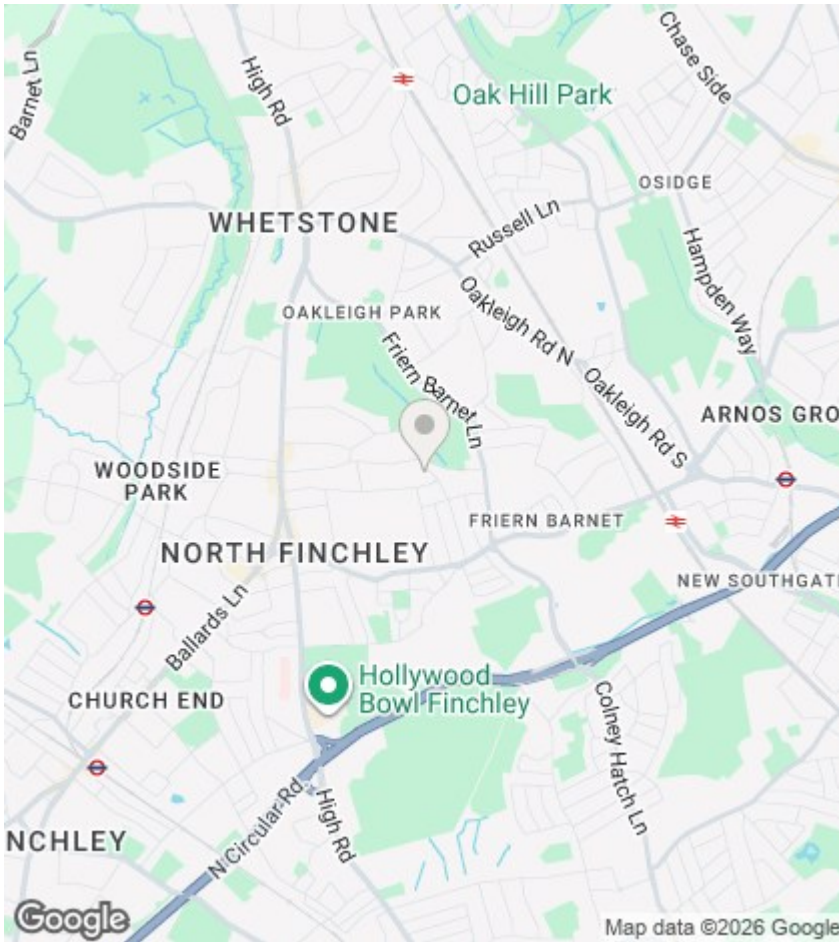
A well maintained and nicely presented two bedroom ground floor flat in a small purpose-built block of four properties opposite Friary Park, 0.6 miles to the shops and amenities of North Finchley High Road, and 1.0 miles from Woodside Park (Northern Line) tube station. This property benefits from use of a communal garden and would make an excellent first time buy or rental investment. Available chain free.



Council Tax Band: D







Directions

Viewings

Viewings by arrangement only. Call 020 8446 4295 to make an appointment.

EPC Rating:

Energy Efficiency Rating		
	Current	Potential
Very energy efficient - lower running costs		
(92 plus) A		
(81-91) B		
(69-80) C		
(55-68) D		
(39-54) E		
(21-38) F		
(1-20) G		
Not energy efficient - higher running costs		
England & Wales	EU Directive 2002/91/EC	